



CSRS-PPP 2.26.1 (2019-05-31)



SampleStat.17o
STNS CACS-GSD 943020 Ottawa ON Canada

| Data Start | Data End | Duration of Observations |
|-------------------------|---------------------------|--------------------------------|
| 2017-04-10 00:00:00.00 | 2017-04-10 02:59:30.00 | 2:59:30 |
| Processing Time | Product Type | |
| 15:01:38 UTC 2019/10/10 | IGS Final | |
| Observations | Frequency | Mode |
| Phase and Code | Double | Static |
| Elevation Cut-Off | Rejected Epochs | Estimation Steps |
| 7.5 degrees | 0.00 % | 30.00 sec |
| Antenna Model | APC to ARP | ARP to Marker |
| AOAD/M_T NONE | L1 = 0.092 m L2 = 0.120 m | H:1.000m / E:0.000m / N:0.000m |

(APC = antenna phase center; ARP = antenna reference point)

Estimated Position for SampleStat.17o

| | Latitude (+n) | Longitude (+e) | Ell. Height |
|-----------------------|-------------------|--------------------|-------------|
| NAD83(CSRS) (1997.0)† | 45° 27' 14.95161" | -75° 37' 25.76639" | 82.558 m |
| SIG_PPP(95%)‡ | 0.013 m | 0.013 m | 0.030 m |
| SIG_TOT(95%)‡ | 0.020 m | 0.018 m | 0.031 m |
| A priori* | 45° 27' 14.95083" | -75° 37' 25.76542" | 83.600 m |
| Estimated – A priori | 0.024 m | -0.021 m | -1.042 m |

Orthometric Height
CGVD2013
(CGG2013a)

95% PPP Error Ellipse (cm)

semi-major: 1.7 cm

semi-minor: 1.6 cm

semi-major azimuth: -84° 44' 13.19"

95% TOT Error Ellipse (cm)

semi-major: 2.5 cm

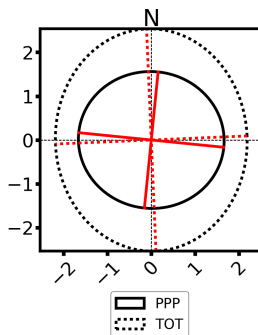
semi-minor: 2.2 cm

semi-major azimuth: -2° 34' 57.43"

UTM (North)
Zone 18

114.997 m

(click for height reference
information)



5033592.330 m (N)
451223.102 m (E)

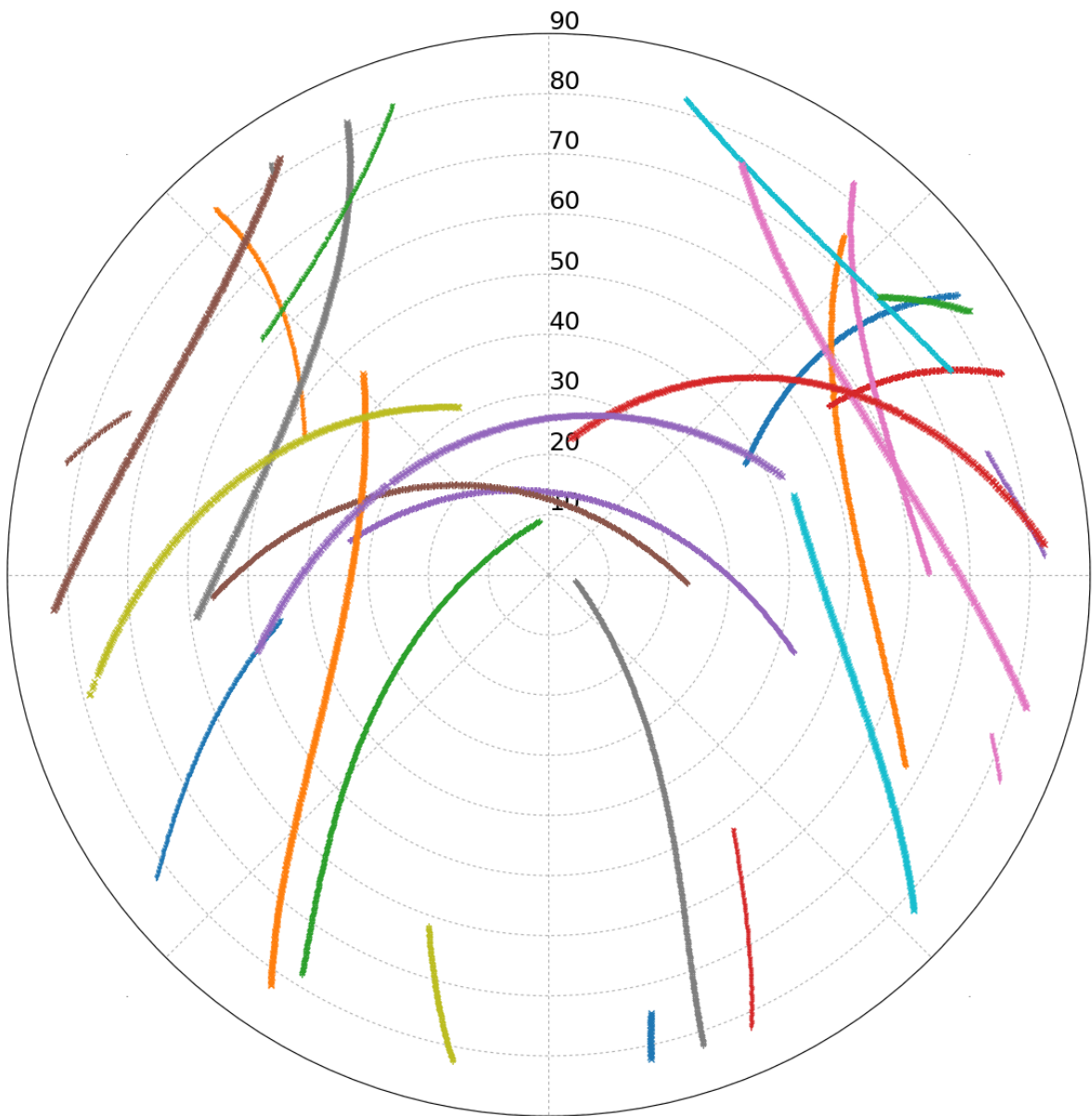
Scale Factors
0.999629 (point)
0.999616 (combined)

*(Coordinates from RINEX header used as a priori position)

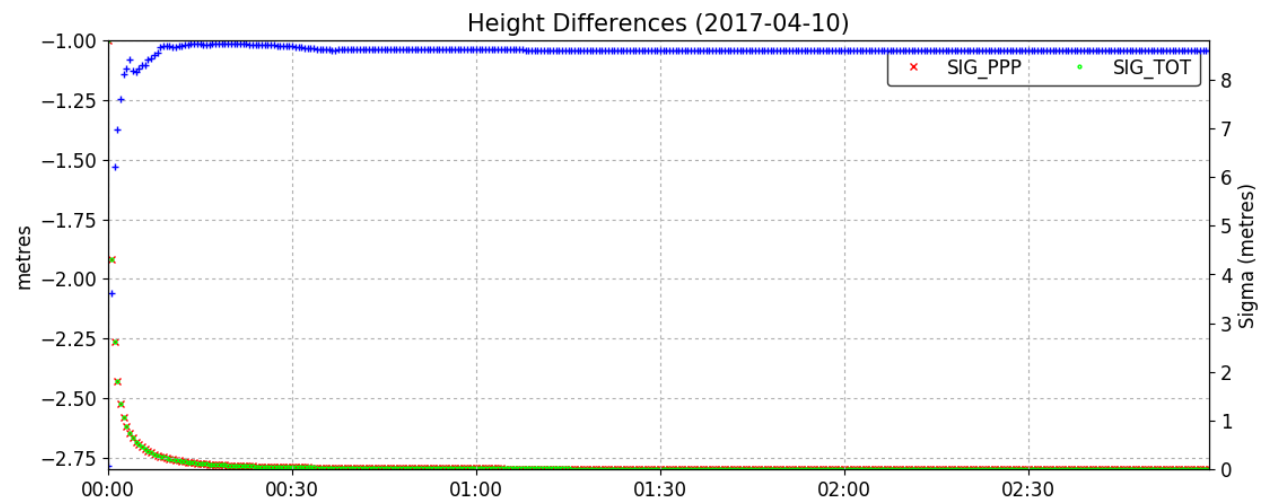
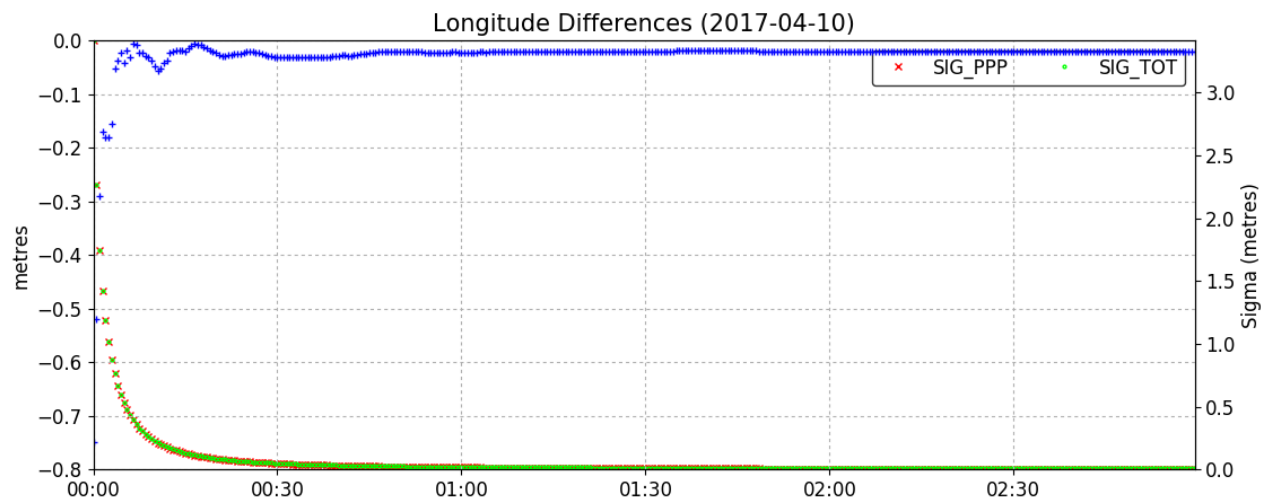
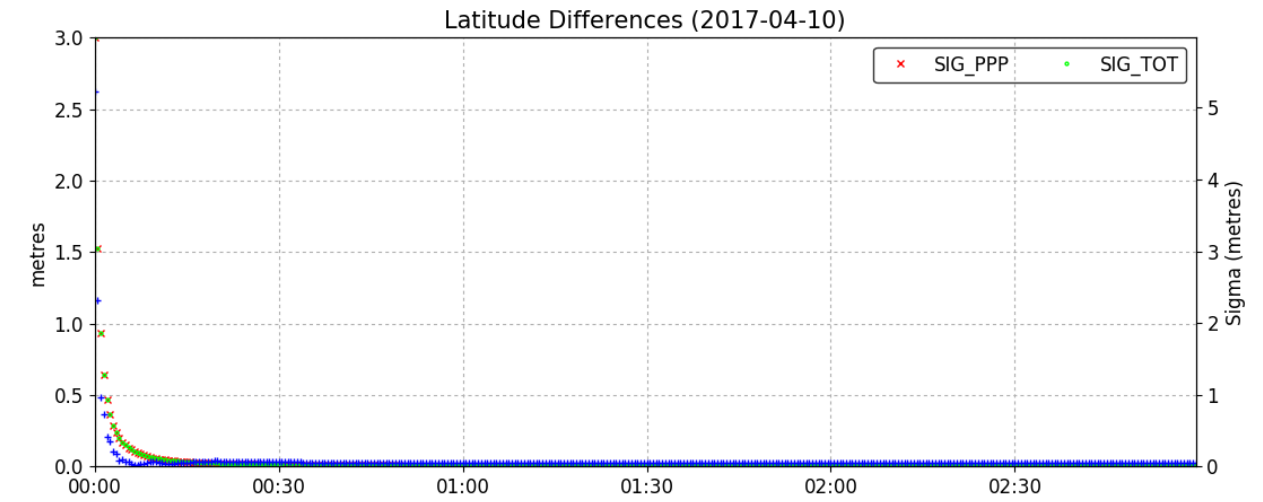
†(Epoch transformation using velocity grid NAD83v70VG (click for documentation))

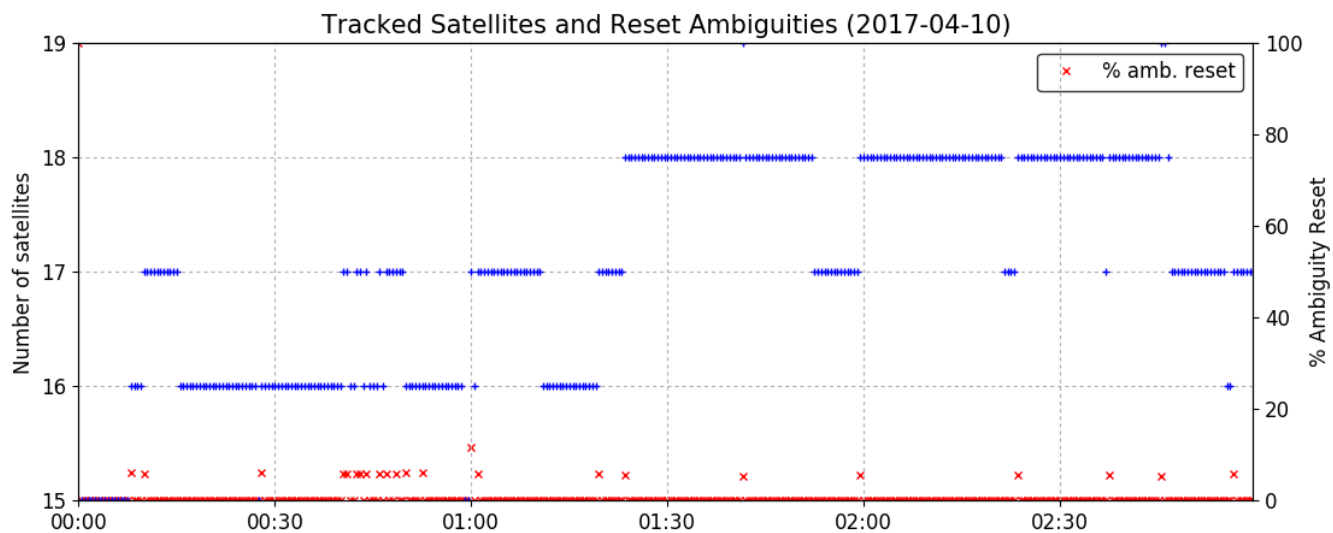
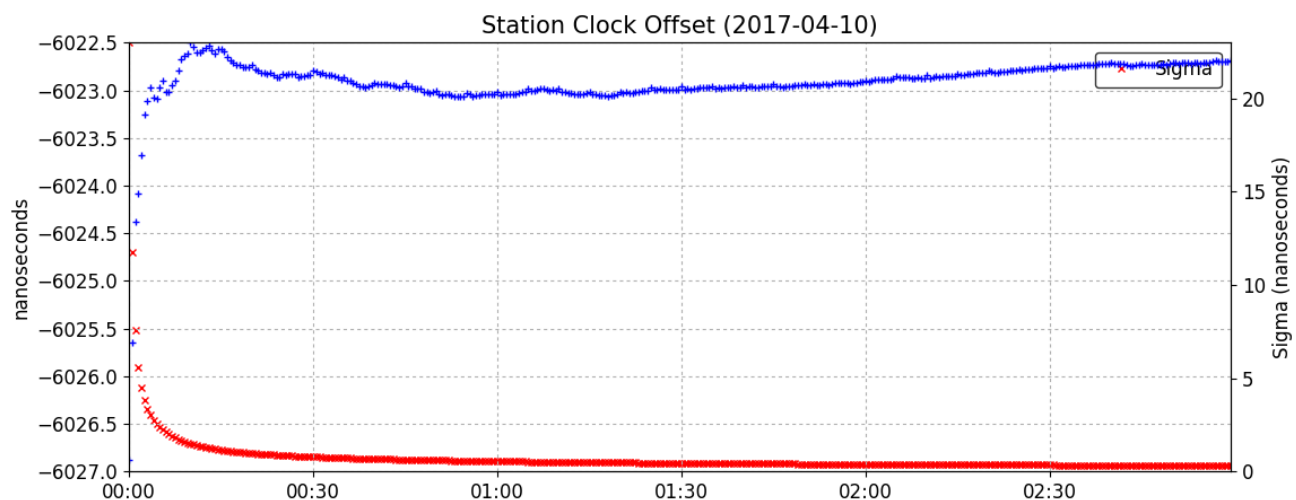
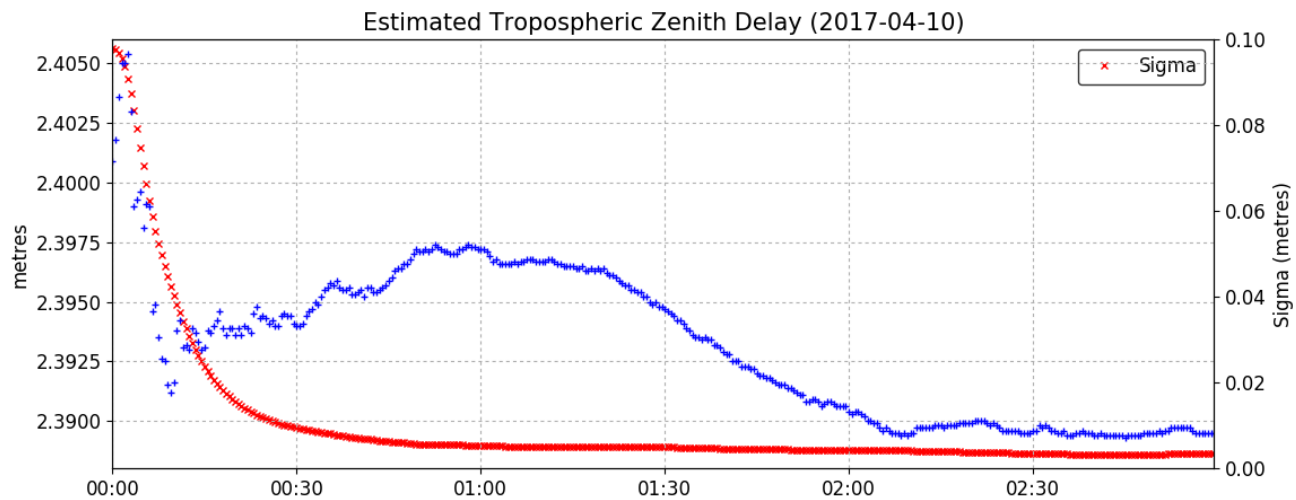
‡SIG_PPP indicates PPP-derived uncertainties, SIG_TOT incorporates uncertainties from epoch transformation

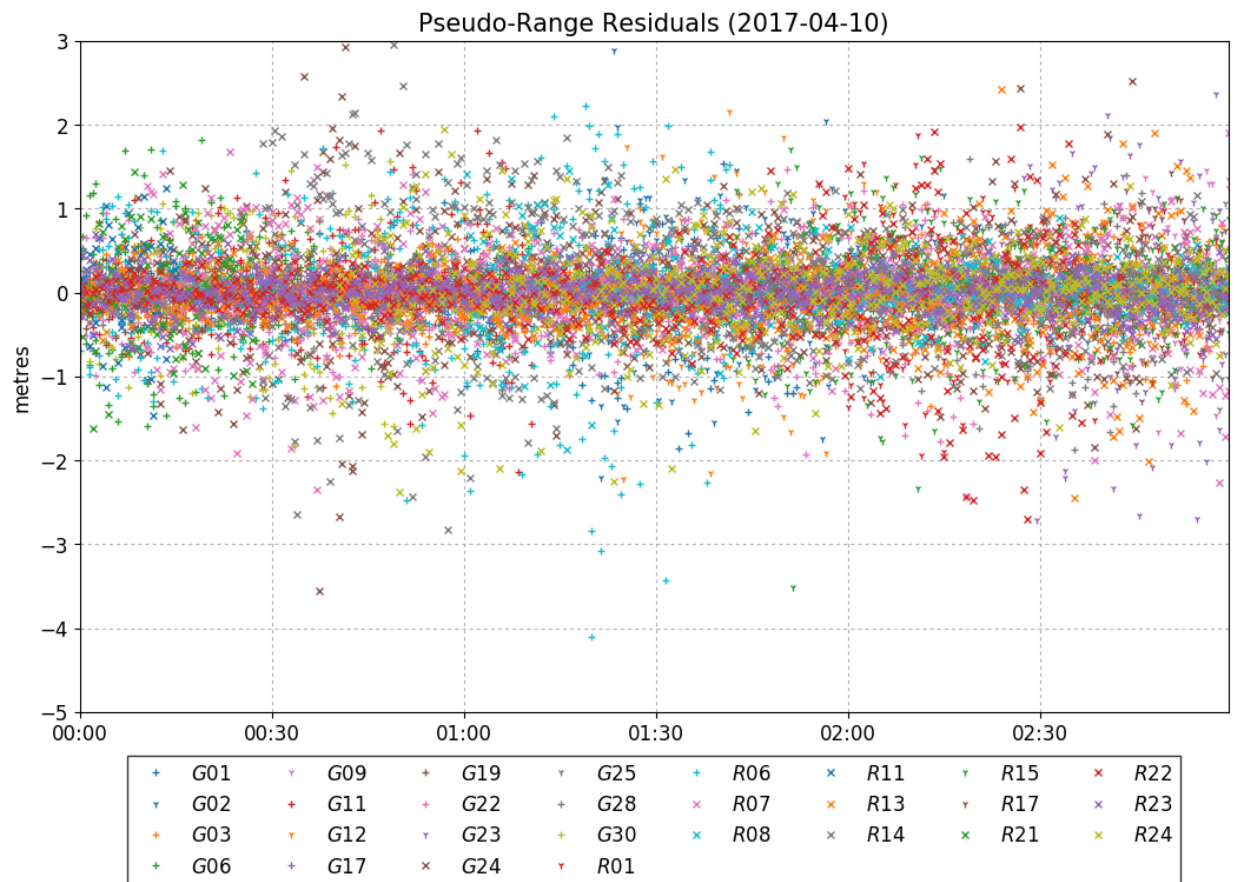
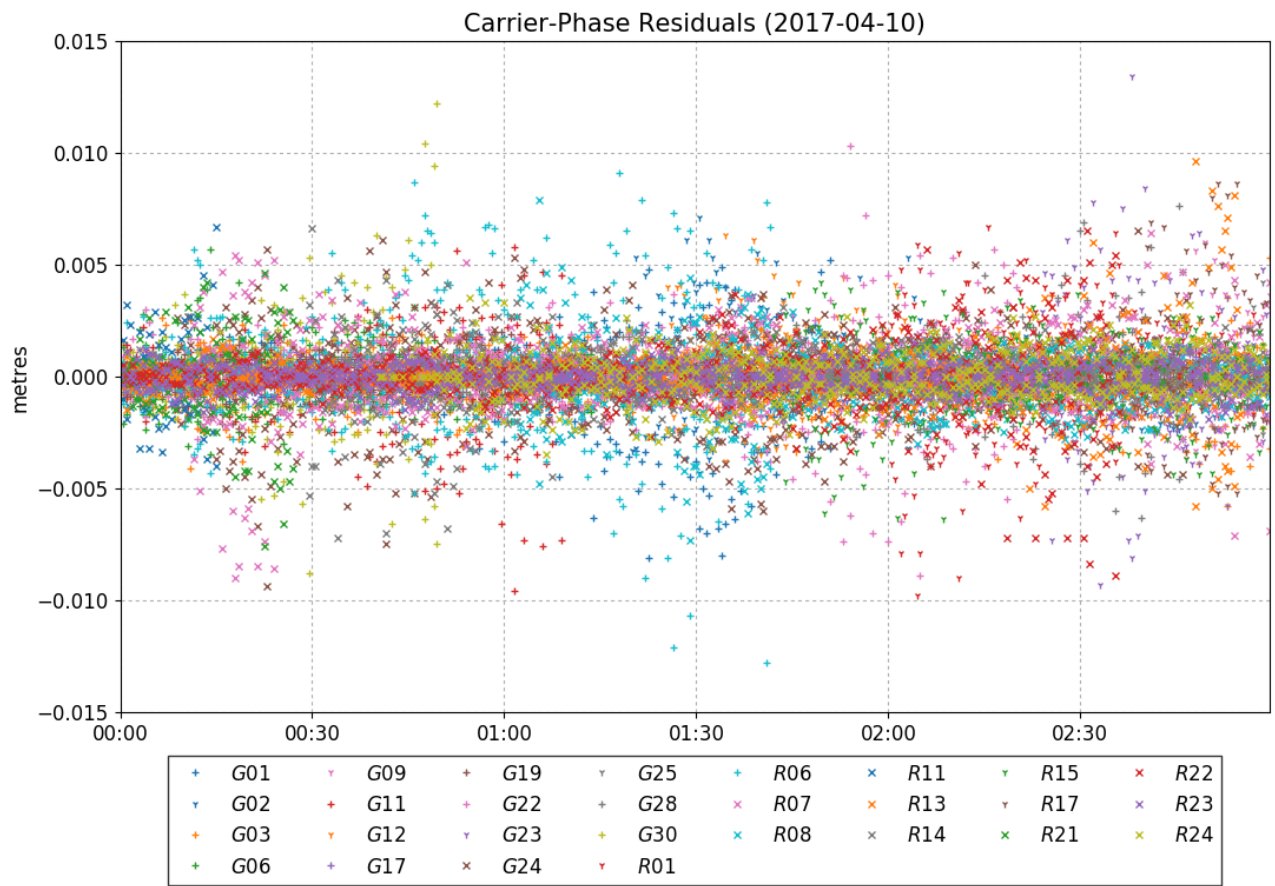
Satellite Sky Distribution



| | | | | | | | | | | | |
|---|-----|---|-----|---|-----|---|-----|---|-----|---|-----|
| + | G01 | + | G11 | + | G23 | + | R01 | + | R13 | + | R21 |
| + | G02 | + | G12 | + | G24 | + | R06 | + | R14 | + | R22 |
| + | G03 | + | G17 | + | G25 | + | R07 | + | R15 | + | R23 |
| + | G06 | + | G19 | + | G28 | + | R08 | + | R17 | + | R24 |
| + | G09 | + | G22 | + | G30 | + | R11 | | | | |







~~~ Disclaimer ~~~

Natural Resources Canada does not assume any liability deemed to have been caused directly or indirectly by any content of its CSRS-PPP online positioning service.

If you have any questions, please feel free to contact:

**Geodetic Integrated Services
Canadian Geodetic Survey
Surveyor General Branch
Natural Resources Canada
Government of Canada
588 Booth Street, Room 334
Ottawa, Ontario K1A 0Y7
Phone: 343-292-6617**

Email: nrcan.geodeticinformation-informationgeodesique.rncan@canada.ca



**Natural Resources
Canada**

**Ressources naturelles
Canada**

Canada